



Leonard Norman Lense Ensign

Leonard was born March 28, 1919 in Chicago, Illinois to Leo and Cassie Lense. He grew up in his grandmother's house on May Street. There were three generations living in the house, including his Grandmother, Alwina Tracker, his Aunt Lydia Tracker, his parents, brother Howard and sister Corinne. He lived at home all the way through his college years.

After high school, Leonard attended Perdue University where he was a member of the Beta Sigma Psi Fraternity. He graduated with the class of 1941.



Leonard joined the Navy Reserve, but I could not find a date. However, after his initial training at the USNR Midshipman's School in New York, he reported to the R-11 for submarine officer training on March 17, 1943.



It appears that he had a good time at Midshipman's School because on February 16, 1943, he married Caroline A. Shippee in New York. They eventually set up a home in La Porte, Indiana which changed his home of record from Chicago.

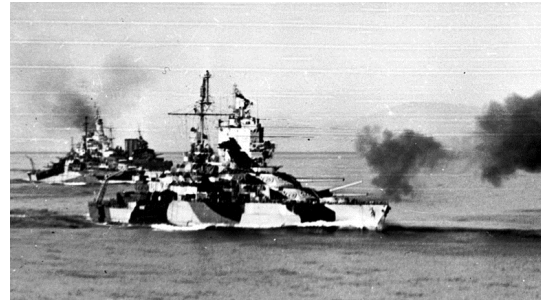
Leonard was transferred from R-11 to Sub Base New London on June 18th and from there to COMSUBPACFLT and was transported aboard the USS Barnes (CVE-20) from San Francisco to Hawaii where he joined the USS Corvina.

Robert Dale Lloyd Torpedoman's Mate, Second Class

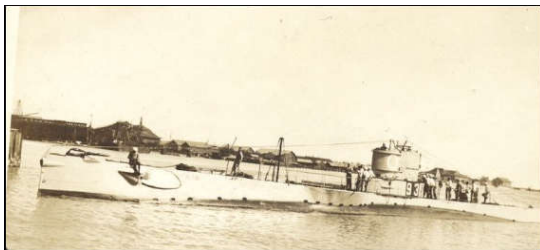
Robert was born in Sapulpa, Oklahoma, on March 7, 1921. His father, Clarence L. Lloyd, was a full blooded member of the Cherokee Indian tribe. I could find no mention of his mother, however, by 1930, Clarence had married Alice. Clarence passed away in 1932 and although Alice was his step-mother, she was his registered next of kin for the rest of his life.

Robert Enlisted on August 12, 1938 at the age of 17 through Dallas, Texas. After Boot Camp he reported to the USS Mississippi (BB-41) on December 2, 1938. While he was on board the USS Mississippi she was operating as part of the Pacific Fleet, based out of Pearl Harbor. He was advanced to S1c on December 16, 1939. He extended his enlistment in June of 1940 and was transferred to the USS Oklahoma for transport to San Pedro on the first leg of his trip to Sub Base New London, Conn., for submarine school.

After Submarine School Robert reported to the light cruiser, USS Trenton (CL-11) for transport to Sub Base Coco Solo, C.Z. where he reported aboard the R-16 (SS-93).



The R-16 had been ordered back to the East Coast in the fall of 1941, she arrived at Key West, Florida, two days after the attack on Pearl Harbor. By 18 December, she was at New London, Connecticut, whence she conducted patrols and assisted in antisubmarine warfare training into February 1942. Shifted to the Virgin Islands the next month she continued her dual mission in the Caribbean Sea, operating from Saint Thomas, United States Virgin Islands, and from Trinidad until 1 March 1943 when she returned to New London. There she conducted operations for the submarine school, the sound laboratory, and for destroyer and destroyer escort training units.



In June of 1942, Robert extended his enlistment for two years and was sent to Norfolk for instruction at Elementary Torpedo School. After returning to the R-16 he was advanced to TM3 on December 1. He then made TM2 on May 1, 1943.

Robert was transferred to Sub Base New London for the commissioning crew of the Corvina on July 26 and reported aboard USS Corvina at commissioning.



**Wallace Eugene Loken,
Motor Machinist's Mate, Second Class**

Wallace was born November 24, 1924 in Columbus, North Dakota to Arthur M. and Palma Loken. Wallace was the first of three children. The family moved from Columbus to Wahpeton and then to Valley City, North Dakota.

Wallace joined the Navy Reserve in Fargo, North Dakota, on October 6, 1942. He went to training and school before reporting for duty aboard the new construction submarine, USS Corvina. He must have been good because he made Motor Mahcinist's Mate, Second Class in under ten months.